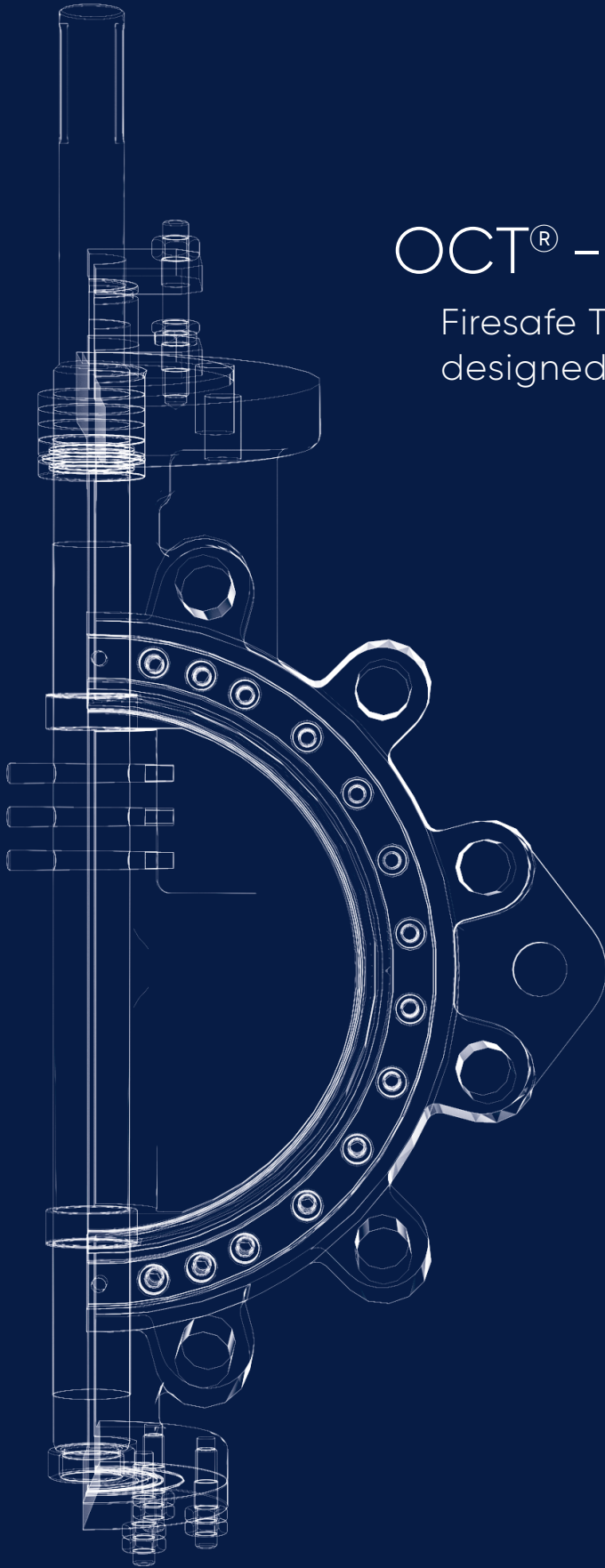


OCT[®] – SW 8500 Series

Firesafe Triple Offset Butterfly valves
designed for seawater applications



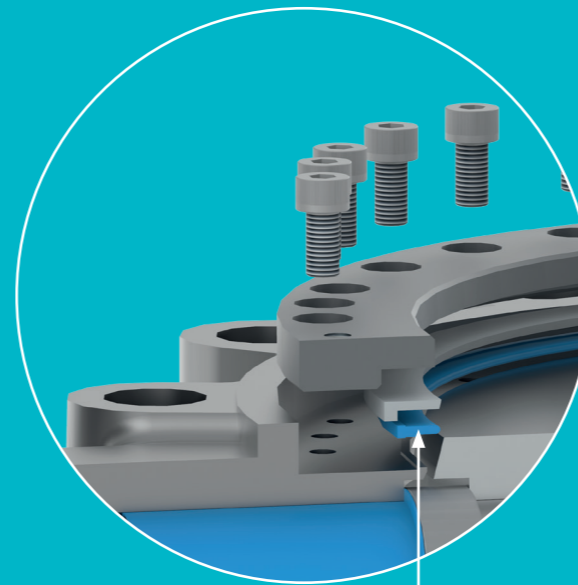
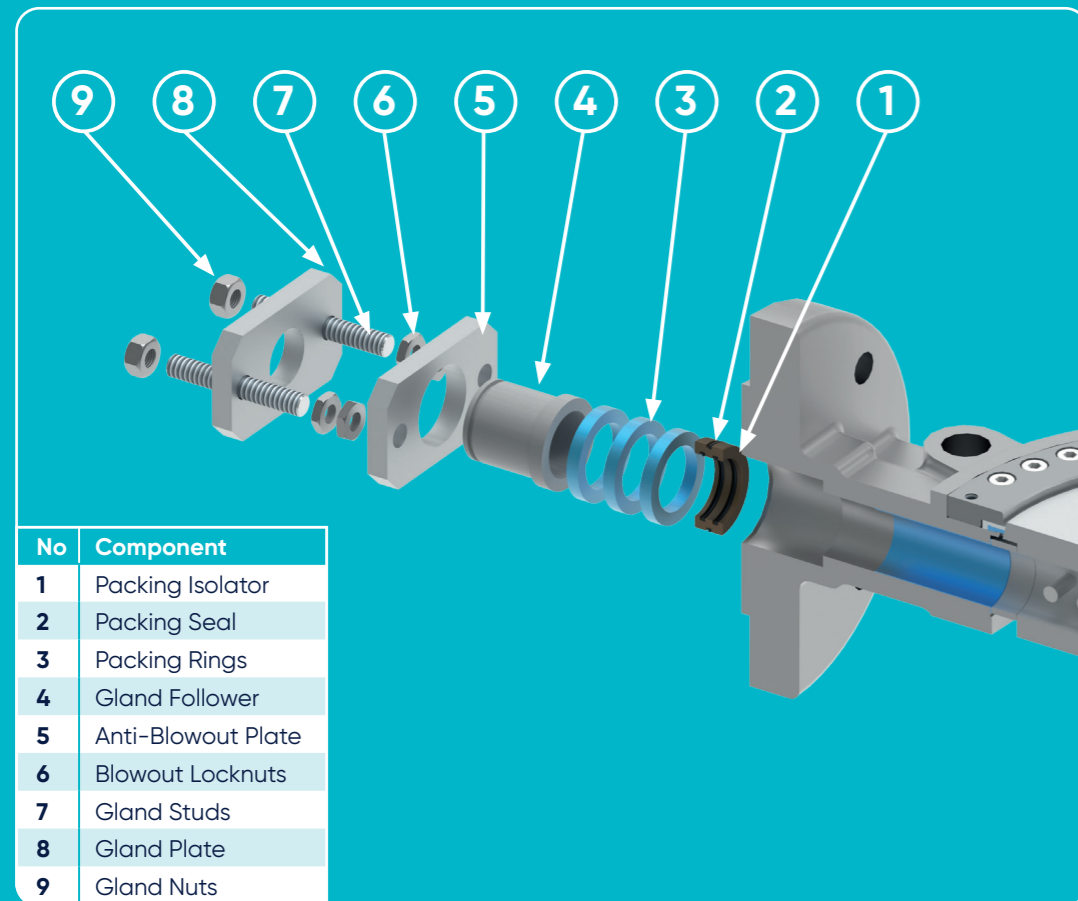
It all flows from expertise.

The OCT®-SW, Triple Offset Butterfly valve is designed to meet the precise demands of the offshore industry, and other applications where seawater is a critical line fluid and where galvanic corrosion is a concern.

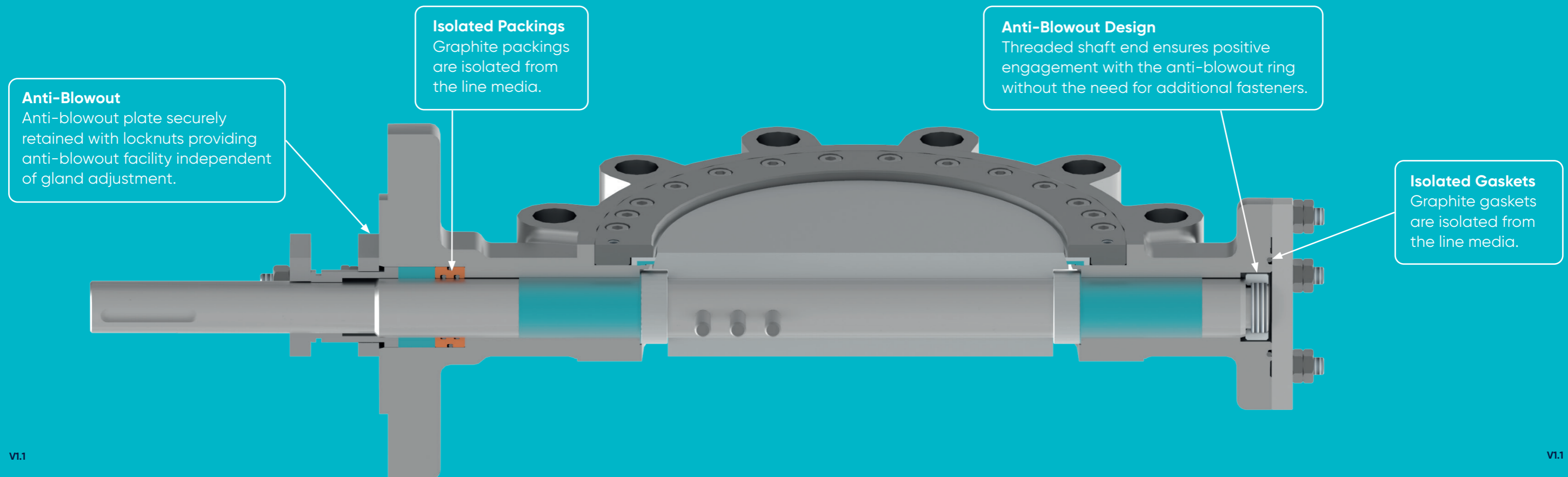
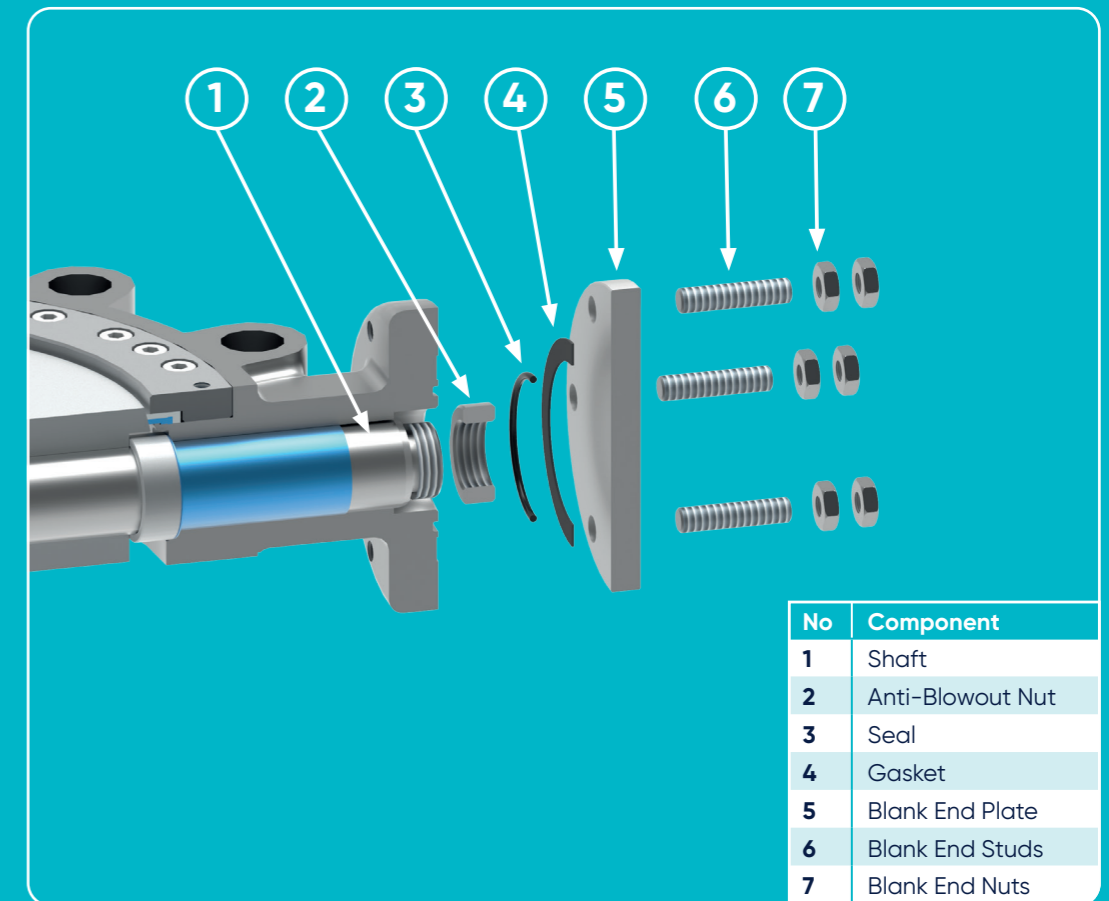


Fire Safe Certified

Firesafe tested and certified to API 6FA, ISO10497 and API 607 (#150 and #300)



Hybrid Seal Technology
Hybrid polymer metallic seal works without the need for additional graphite gaskets.



Engineering data

OCT®-SW Design Features

- ✔ Patented "OCT®" sealing technology designed from the outset to provide the ultimate in cutting edge Butterfly Control valve technology
- ✔ No graphite in contact with the line media to remove the risk of galvanic effects
- ✔ Hybrid polymer metallic seal works without the need for additional graphite gaskets
- ✔ Both gland and blank end graphite seals are fully isolated from contact with line media
- ✔ Firesafe certified to API 6FA, ISO 10497 and API 607 (#150 and #300)
- ✔ Internal and external anti-blowout protection as standard

Performance Benefits

- ✔ Prevents the risk of galvanic corrosion
- ✔ Torque energised seal for low and high pressures
- ✔ Self-compensating design for wear and temperature
- ✔ No internal bolting, eliminating the risk of fasteners loosening due to vibration
- ✔ Disc supplied hard faced as standard for improved abrasion resistance

- ✔ Torque seated design ensures consistent sealing performance
- ✔ Seat leakage Class up to ANSI/FCI 70.2. Class IV to VI, API598 Zero
- ✔ The quarter turn design ensures ease of actuation for both control and on/off duties
- ✔ Standard face to face dimensions to API 609/ISO 5752 and B16.10 with non-standard dimensions available on request
- ✔ Valve size range – 80mm (3") – 600mm (24") with larger sizes up to 72" on request
- ✔ Body pressure ratings #150 and #300, Higher rating on request
- ✔ Design temperature: -30°C to +120°C (-47 to +230°C with alternative seals)
- ✔ Manufactured in aluminium bronze, duplex, super duplex and titanium

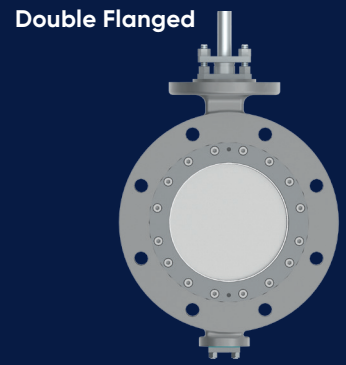
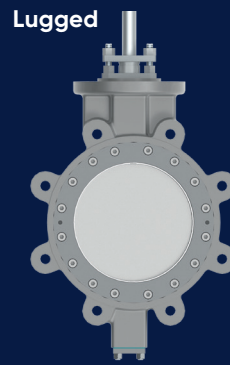
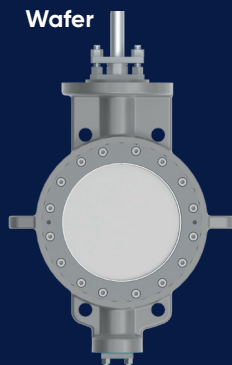
- ✔ Available with a range of low noise and anti-cavitation trims
- ✔ Body mounted seal to reduce wear from line media
- ✔ Fully in-field serviceable
- ✔ Reliable performance. Bubble tight shutoff available

Dimensions

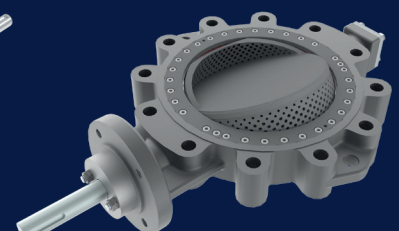
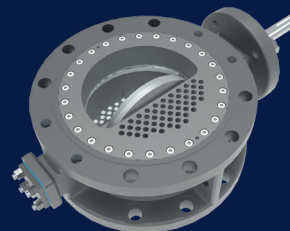
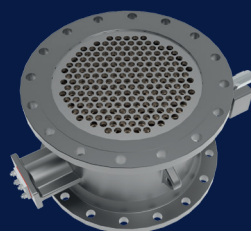
Refer to the 8500 Series brochure for further information on dimensions and sizes.

Valve body style options

The OCT® - SW Series valve is available in 3 basic body styles, Wafer, Lugged and Double Flanged (long and short pattern). Special face to face options are available on request.



Trim options available



Engineering
Excellence

Head Office – Brighouse UK
Heywoods Industrial Park,
Birds Royd Lane,
Brighouse, HD6 1NA.

T: +44 (0)845 6070 710
E: sales@severnvalve.com

Gloucester UK
Olympus Park,
Quedgeley,
Gloucester, GL2 4NF.

T: +44 (0)845 223 2040
E: sales@severnvalve.com

Chennai India
F96 & F97, SIPCOT Industrial Park,
Irrungattukottai, Chennai,
Tamilnadu, India – 602 117.

T: +91 44 4710 4200
E: sales@severnvalve.com

www.severnvalve.com

Our policy is one of continuous improvement and we reserve the right to modify these specification details without notice.

VI.1