

# Medium Duty Rotary Valve (MDR)

INDUSTRY  
Subsea

NEW PRODUCT INITIATIVE  
Enhanced rotary valve delivering  
cost effective benefits

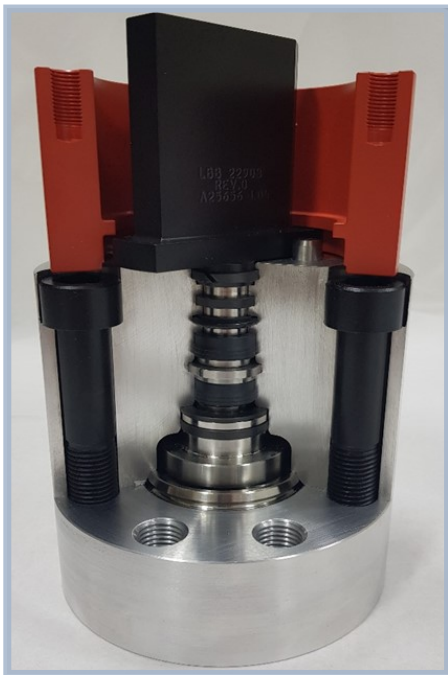
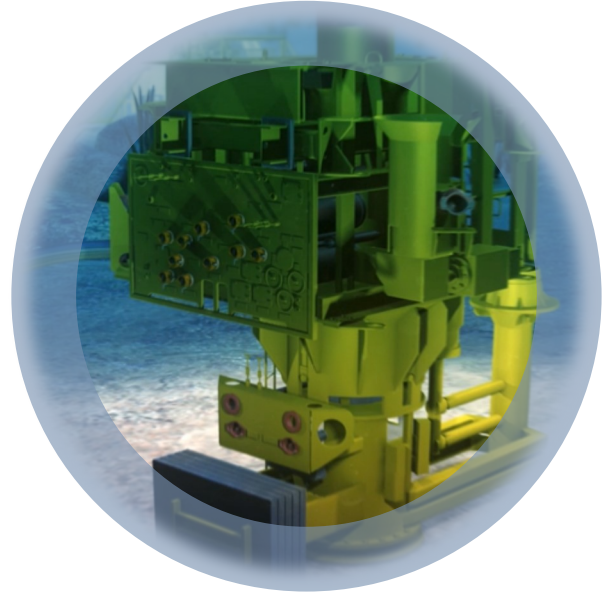
## INNOVATIVE SUBSEA TECHNOLOGY DELIVERS A COST EFFECTIVE VALVE SOLUTION

The 30 years of success in the development, manufacture and delivery of LB Bentley subsea valves is attributed to not just innovative engineering, but to the ability to listen to the requirements of the customer and understanding industry needs.

Following the successful LB Bentley Rotary Gate Valve and the push to provide our industry with cost effective solutions we are proud to announce the release of our Medium Duty Rotary Gate Valve (MDR).

The valve has been designed with panel mounted applications in mind, such as, hydraulic control and test lines on XT, Manifold panels and Subsea Distribution Units in mind where traditionally needle and ball valve products are used but the desire for a metal sealing gate valve would provide increased reliability without the need for additional expense.

This new valve, the Medium Duty Rotary (MDR) valve, delivers the reliability and performance of our field proven design with the economic benefit of a simplified design.



Medium Duty Rotary Valve

## PRODUCT BENEFITS & FEATURES

**Simplified sealing system delivers a reliable solution along with economic benefits and fully satisfies the requirements of API 6A and 17D.**

**Direct quarter turn operation allows for positive indication through provided integral ROV receptacle.**

**Field proven design concepts and components.**

**Low friction interface resulting in consistent operating torques.**

**Metal to Metal sealing technology**

**Self Cleaning**

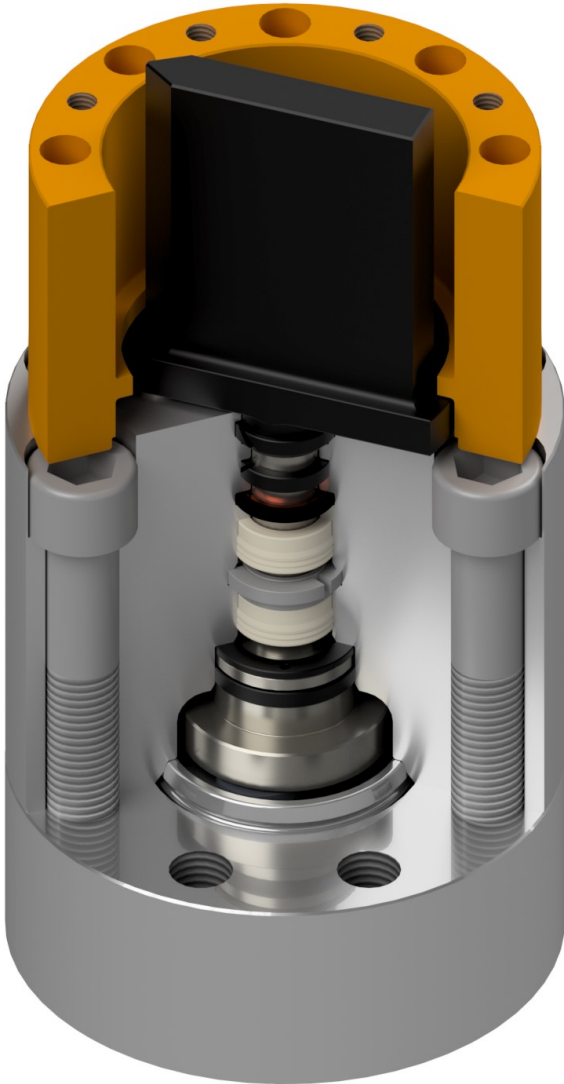
**Standardisation of components and fixed connections allow for the possibility of stocking programs, reducing lead-times and ensuring costs are kept to a minimum.**

For more information on LB Bentley Ltd call +44 (0)1453 733 060, or visit [www.severnvalve.com](http://www.severnvalve.com)

# Medium Duty Rotary Valve (MDR)

INDUSTRY  
Subsea

NEW PRODUCT INITIATIVE  
Enhanced rotary valve delivering  
cost effective benefits



## DESIGN SPECIFICATIONS

Successfully passed qualification to API 17D 2<sup>nd</sup> edition to the following requirements:

- ✓ PR2 Temperature rated API 6A -29°C (-20°F) to 82°C (180°F)
- ✓ Maximum Working Pressure up to 15,000psi (1035bar)
- ✓ ROV interface to ISO 13628-8 Type A or Class 2
- ✓ Hyperbaric qualification to a maximum water depth of 3,048 metres (10,000ft)
- ✓ FF Trim (22% Chrome Duplex) material to BS EN 10201 3.1 certification, DNV RPF112 HISC analysis
- ✓ Dual stem sealing
- ✓ NORSOK compliant materials

## CONNECTIONS

3/8" Autoclave Medium Pressure SF375CX20

9/16" Autoclave Medium Pressure SF562CX20

3/4" Autoclave Medium Pressure SF750CX20

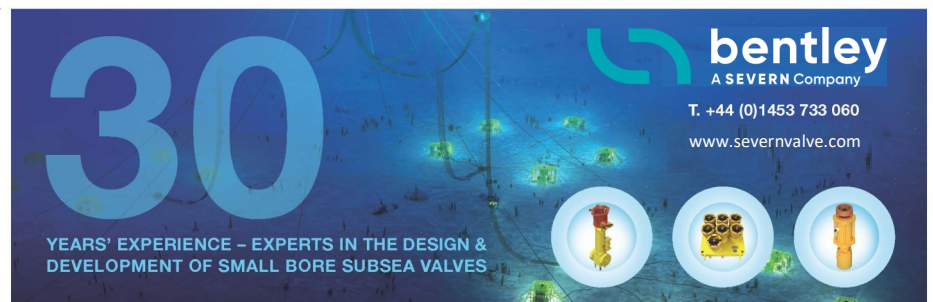
Butt Weld preparations available for 3/8", 1/2" and 3/4" tubing

All the above connections can be supplied in either side or bottom orientation or a combination of both.

## PRODUCT PORTFOLIO

LB Bentley can design, manufacture and deliver a suite of small bore subsea valves that can fully satisfy your requirements, by offering valves that have field proven reliability, are fit for purpose, offer economic benefits and exceed API requirements.

For more information on our full product range visit [www.severnvalve.com](http://www.severnvalve.com)



**30**  
YEARS' EXPERIENCE - EXPERTS IN THE DESIGN & DEVELOPMENT OF SMALL BORE SUBSEA VALVES

**bentley**  
A SEVERN Company

T. +44 (0)1453 733 060  
[www.severnvalve.com](http://www.severnvalve.com)

