

February 07, 2022

Attention: Simon Walker
SEVERN UNIVAL LTD
HEYWOODS INDUSTRIAL PARK
BIRDS ROYD LANE BRIGHOUSE
WEST YORKSHIRE, HD61NA

The design submission, tracking number 2022-00443, originally received on January 26, 2022 was surveyed and accepted for registration as follows:

CRN : 0C22084.2 **Accepted on:** February 07, 2022
Reg Type: NEW DESIGN **Expiry Date:** February 07, 2032
Drawing No. : T0V-150-TL-SA-6A
Fitting type: Valve

The registration is conditional on your compliance with the following notes:

Valves are in full compliance with B16.34, B16.5 and B16.47.

As indicated on AB-41 Statutory Declaration form and submitted documentation, the code of construction are B16.34, B16.47 and B16.5.

- It is our understanding that the fitting(s), included as the scope of this submission, that is(are) subject to the Safety Codes Act shall comply with the requirements of the indicated Standard or Code of Construction on the AB-41 Statutory Declaration as supported by the attached data which identifies the dimensions, materials of construction, press./temp. ratings and the basis for such ratings, and the identification marking of the fittings.*
- This registration is valid only for fittings fabricated at the location(s) covered by the QC certificate attached to the accepted AB-41 Statutory Declaration form.*
- This registration is valid only until the indicated expiry date and only if the Manufacturer maintains a valid quality management system approved by an acceptable third-party agency until that date.*
- Should the approval of the quality management system lapse before the expiry date indicated above, this registration shall become void.*

An invoice covering survey and registration fees will be forwarded from our Revenue Accounts.

If you have any question don't hesitate to contact me by phone at (780) 433-0281 ext 3388 or fax (780) 437-7787 or e-mail Liu@absa.ca.

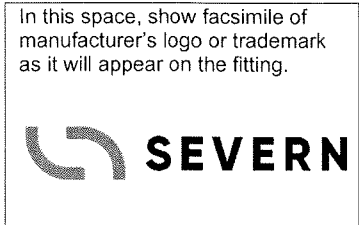
Sincerely,



LIU, XING, P. Eng.
DOP Cert. No. D00008861

STATUTORY DECLARATION
Registration of Fittings
Single or Multiple Fitting Designs within one Fitting Category

I, Simon Walker, Senior Principal Engineer
(name of applicant) (position title) (must be in a position of authority)
of Severn Unival Ltd
(name of manufacturer)
located at Heywoods Industrial Park, Birds Royd Lane, Brighouse, HD6 1NA, UK
(plant address)



do solemnly declare that the fittings listed hereunder, which are subject to the Safety Codes Act (select only one)

- comply with the requirements of ASME B16.34-2017, B16.5-2017
ASME B16.47-2017 which specifies the dimensions,
(title of recognized North American Standard)
materials of construction, pressure/temperature ratings and identification marking of the fittings, or
- are not covered by the provisions of a recognized North American standard and are therefore
manufactured to comply with _____ as supported by the
(title of code of construction or other applicable document)
attached data which identifies the dimensions, materials of construction, pressure/temperature ratings
and the basis for such ratings, and the identification marking of the fittings.

I further declare that the manufacture of these fittings is controlled by a quality control program which has been verified as described in the below Table as being suitable for the manufacturing of these fittings to the stated standard, regulation, code, guideline or other applicable document. The fittings covered by the declaration for which I seek registration are as provided in the Supplementary Sheet(s) attached.

Quality Program Verification and Manufacturing Sites


A copy of the Quality Certificate from each manufacturing site must be included

Item #	Product Description, Model or Series	Quality Program	Scope of Certification	Expiry Date	Verifying Organization	Location(s) Plant Name and address
1.	8000 Series Butterfly Valves	ISO 9001:2015	The design, development, manufacture and supply to customer order or specification of all types of industrial/control valves, actuators and valve mounted equipment, together with servicing of this	03-31-2022	BSI	Severn Unival Limited, Heywoods Industrial Park, Birds Royd Lane, Brighouse HD6 1NA, United Kingdom

			equipment			
2.	8000 Series Butterfly Valves	ISO 9001:2015	The design, development, manufacture and supply to customer order or specification of all types of industrial/control valves, actuators and valve mounted equipment, together with servicing of this equipment	03-31-2022	BSI	Severn Unival Limited, Olympus Park, Quedgeley, Gloucester, GL2 4NF, United Kingdom

In support of this application, the following information, calculations and/or test data are attached:

Brochures: 8100/8200, 8300, 8500. **Certificates:** ISO 9001:2015. **Calculations:** 24-TOV-BBMWTC,
24-TOV-BEPC, 24-TOV-GSC, 24-TOV-MBMWTC, 24-TOV-PBMWTC



(Signature of the Declarer)

2022/01/26

(Date)

DECLARED before me at _____ in the _____ of _____
(city) (province, territory, or state)

this _____ day of _____, _____
(Month) (Year)

(print) _____
(a Commissioner of Oaths or Notary Public)

(sign) _____
(a Commissioner of Oaths or Notary Public)

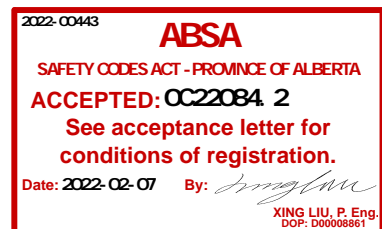
(expiry date (mm/dd/yy))

Commissioner of Oaths / Notary Public in and for: _____
(province, territory, or state)

For ABSA Office Use Only:

NOTES: _____

To the best of my knowledge and belief, the application meets the requirements of the Safety Codes Act and CSA Standard B51, Part 1, Clause 4.2, and is accepted for registration in Category _____
.
CRN: _____
Registered Date: _____
Expiry Date: _____
Signature: _____
(Signature of the Administrator/SCO)
The information you provide is necessary only for the administration of the programs as required by the Alberta Safety Codes Act and Regulations in the Pressure Equipment Discipline



This stamp and signature have been affixed electronically to this registered design as required by Section 20(1) of the Pressure Equipment Safety Regulation, in accordance with the Electronic Transactions Act.

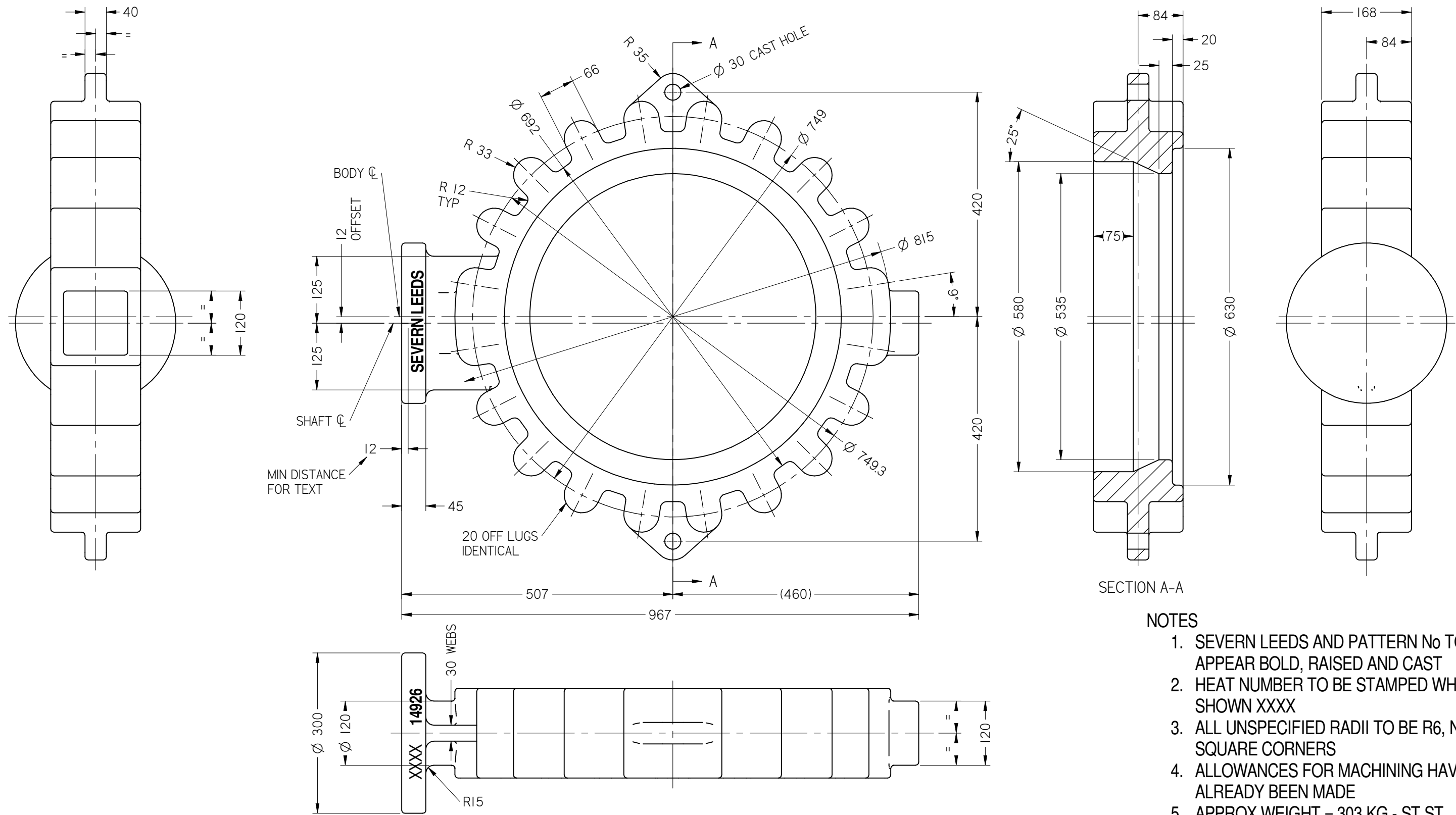
Table 1 Scope of Fitting Designs**

Fitting Des.	Primary Pressure Bearing / Retaining Component	Material of Const.	Fitting Size Range &/or Schedule	MAWP or Press rating	Temp Range Min. / Max.	End Conn. & Size & Range	Code / Standard of Construction	Reference Catalogue (pages) or Drawing(s)
Valves	Butterfly	A216 WCB, A216 WCC, A217 WC6, A352 LCC, A351 CF8M A351 CF3M A351 CK20 A351 CK3MCuN A890 4A A895 5A A890 6A A995 4A A995 5A A995 6A A182 F51 A182 F55 B367 C2 B348 GR2 CC333G A105 A240 316 A516 GR 60	NPS 2-84", Wafer, Lugged Double Flanged & Butt Weld End	UP TO #2500 & API 10K	-196°C to + 1000°C	Classes ASME - 150, 300, 600, 900, 1500, 2500, BS 4504 - PN6, PN10, PN16, PN25 PN40	ASME B16.34, ASME B16.5, ASME B16.47, ASME B16.25, API 609	8100/8200 Brochure, 8300 Brochure, 8500 Brochure Body Casting Drg: B3-14926 Body Machining Drg: B3-16692 Parts List Drg TOV-150-TL-SA-6A G.A Drawing TOV-3-24 ins Dimensions – G Box

Table 2 Additional Scope Information

List/Attach Additional Detail and References (Product Configurations, Options, Illustrations, etc.)
Example: Cryo Butterfly Valve Brochure

** For additional alternatives of Table 1, refer to Form AB-41a, Guide for Completing Form AB-41



SECTION A-A

NOTES

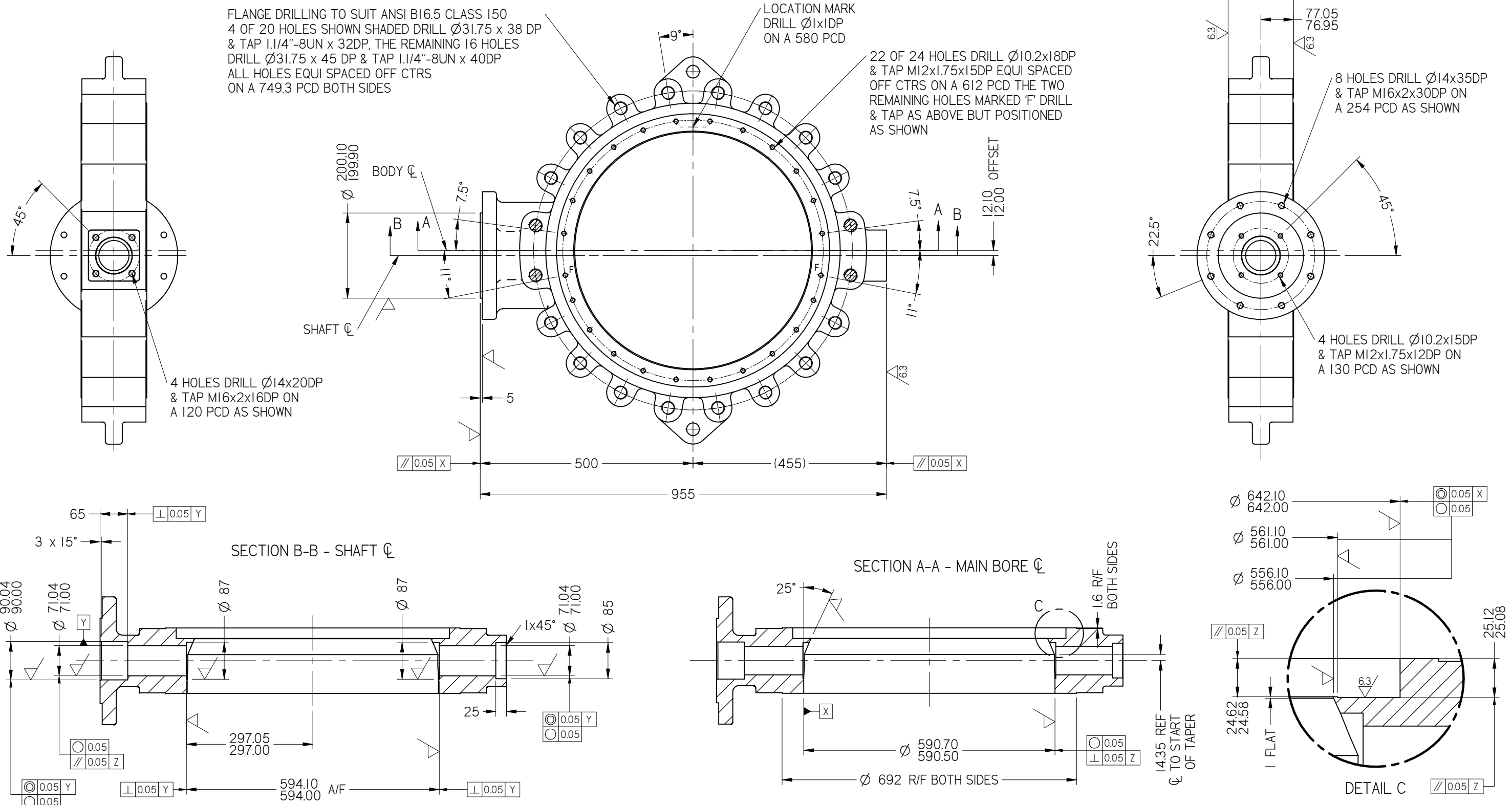
1. SEVERN LEEDS AND PATTERN No TO APPEAR BOLD, RAISED AND CAST
2. HEAT NUMBER TO BE STAMPED WHERE SHOWN XXXX
3. ALL UNSPECIFIED RADII TO BE R6, NO SQUARE CORNERS
4. ALLOWANCES FOR MACHINING HAVE ALREADY BEEN MADE
5. APPROX WEIGHT = 303 KG - ST.ST

SEVERN LEEDS VALVE
 SEVERN UNIVAL LIMITED,
 SEVERN HOUSE,
 HEYWOODS INDUSTRIAL PARK,
 BIRDS ROYD LANE,
 BRIGHOUSE, HD6 1NA.
 TEL: +44 (0) 8456 070710
 FAX: +44 (0) 8456 070711

UNLESS OTHERWISE STATED:	
SURFACE FINISH:	0.8
UNTOLERANCED DIMENSIONS:	±0.4
ANGULAR DIMENSIONS:	±0.5°
MACHINED ALL OVER, OR:	
WHERE INDICATED:	✓
EXCEPT WHERE INDICATED:	✓

GEO. TOL. SYMBOLS TO BS:308 PT.3	RUNOUT		POSITION						
	PARALLELISM		SYMMETRY						
	SQUARENESS		ANGULARITY						
	STRAIGHTNESS		PROFILE OF A LINE						
	FLATNESS		PROF' OF A SURFACE						
	CIRCULARITY		CONCENTRICITY		REV	DATE	DETAIL		
	CYLINDRICITY		MAX MAT'L CONDITION		CHANGE RECORD				

TITLE			
TOV, LUGGED BODY CASTING, Ø70 SHAFT 600mm - ANSI 150 - BUTTERFLY VALVE			
DRAWN	jamesmurgatroyd	A3	FIRST PROJECT TOV
DATE	31/01/2020		
CKD	SW	DRAWING NO	REV R0
DATE	18/02/2020	B3-14926	
COPYRIGHT 2013. THIS DRAWING IS THE PROPERTY OF SEVERN UNIVAL LIMITED. ALL INFORMATION HEREIN IS CONFIDENTIAL AND DISTRIBUTION OUTSIDE THE COMPANY WITHOUT WRITTEN PERMISSION IS FORBIDDEN.			



SEVERN
LEEDS VALVE

SEVERN UNIVAL LIMITED,
SEVERN HOUSE,
HEYWOODS INDUSTRIAL PARK,
BIRDS ROYD LANE,
BRIGHOUSE, HD6 1NA.
TEL: +44 (0) 8456 070710
FAX: +44 (0) 8456 070711

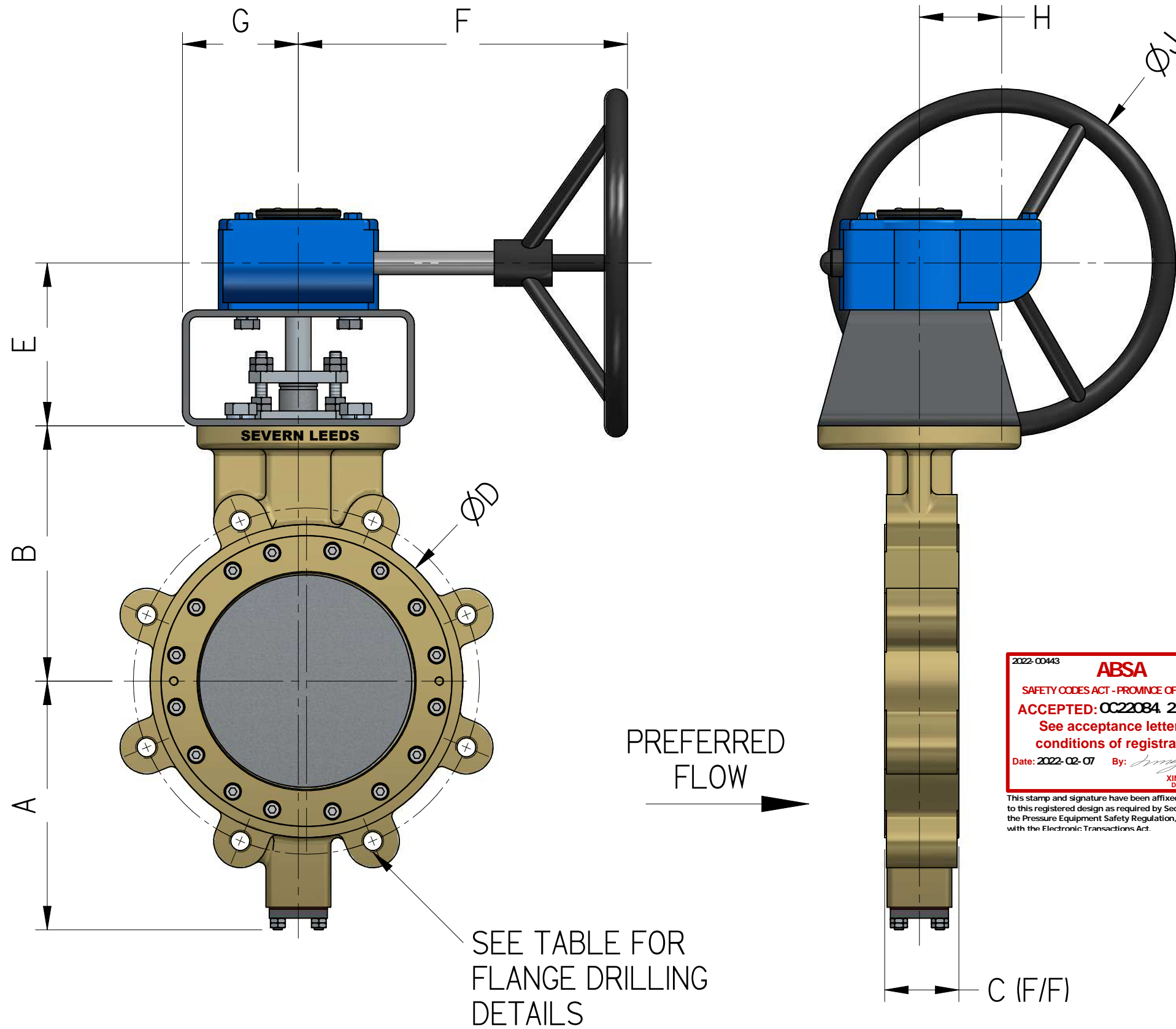
UNLESS OTHERWISE STATED:	
SURFACE FINISH:	0.8
UNTOLERANCED DIMENSIONS:	± 0.4
ANGULAR DIMENSIONS:	$\pm 0.5^\circ$
MACHINED ALL OVER, OR:	
WHERE INDICATED:	<input checked="" type="checkbox"/>
EXCEPT WHERE INDICATED:	<input checked="" type="checkbox"/>

GEO. TOL. SYMBOLS TO BS.308 PT.3	RUNOUT		POSITION	\varnothing		
	PARALLELISM		SYMMETRY			
	SQUARENESS		ANGULARITY			
	STRAIGHTNESS		PROFILE OF A LINE			
	FLATNESS		PROF' OF A SURFACE			
	CIRCULARITY		CONCENTRICITY	\odot	REV	DATE
	CYLINDRICITY		MAX MAT'L CONDITION	(M)	CHANGE RECORD	

TITLE			
TOV, LUGGED BODY MACHINING, $\varnothing 70$ SHAFT 600mm - ANSI 150 - BUTTERFLY VALVE			
DRAWN	jamesmurgatroyd	A3	FIRST PROJECT TOV
DATE	31/01/2020		
CKD	SW	DRAWING NO	REV R0
DATE	18/02/2020	B3-16692	

© COPYRIGHT 2013. THIS DRAWING IS THE PROPERTY OF SEVERN UNIVAL LIMITED. ALL INFORMATION HEREIN IS CONFIDENTIAL AND DISTRIBUTION OUTSIDE THE COMPANY WITHOUT WRITTEN PERMISSION IS FORBIDDEN.

NOTE : PICTORIAL REPRESENTATION ONLY



2022-00443
ABSA
 SAFETY CODES ACT - PROVINCE OF ALBERTA
ACCEPTED: OC22084 2
 See acceptance letter for conditions of registration.
 Date: 2022-02-07 By: *Xing Liu*
 XING LIU, P. Eng.
 DOP: D00008661

This stamp and signature have been affixed electronically to this registered design as required by Section 20(1) of the Pressure Equipment Safety Regulation, in accordance with the Electronic Transactions Act.

SIZE	A	B	C	D	E	F	G	H	J
3"	140	125	46	127	87	116	60	43	100
4"	162	145	54	154	89	175	60	52	100
6"	182	170	56	216	129	187	75	52	200
8"	215	220	64	270	141	237	100	71	300
10"	263	270	71	324	142	225	100	86	400
12"	295	300	80	381	148	346	110	105	600
14"	330	340	92	413	148	346	110	105	700
16"	345	350	102	470	156	346	107	53	600
18"	395	385	114	534	156	346	107	53	700
20"	415	445	127	584	205	400	150	106	400
24"	485	495	154	692	212	432	150	140	500

NOTES:
 DIMENSIONS ARE SUBJECT TO CHANGE WITHOUT NOTICE

FLANGE DRILLING INFORMATION

SIZE	HOLE QTY	HOLE SIZE	PCD
3" (80mm)	4	5/8"-11 UNC	152.4
4" (100mm)	8	5/8"-11 UNC	190.5
6" (150mm)	8	3/4"-10 UNC	241.3
8" (200mm)	8	3/4"-10 UNC	298.5
10" (250mm)	12	7/8"-9 UNC	362
12" (300mm)	12	7/8"-9 UNC	431.8
14" (350mm)	12	1"-8 UN	476.3
16" (400mm)	16	1"-8 UN	539.8
18" (450mm)	16	1.1/8-8 UN	577.9
20" (500mm)	20	1.1/8-8 UN	635
24" (600mm)	20	1.1/4-8 UN	749.3

REV	DETAIL	DATE

CHANGE RECORD
 DRAWN S. WALKER
 CHECKED .
 APPROVED .



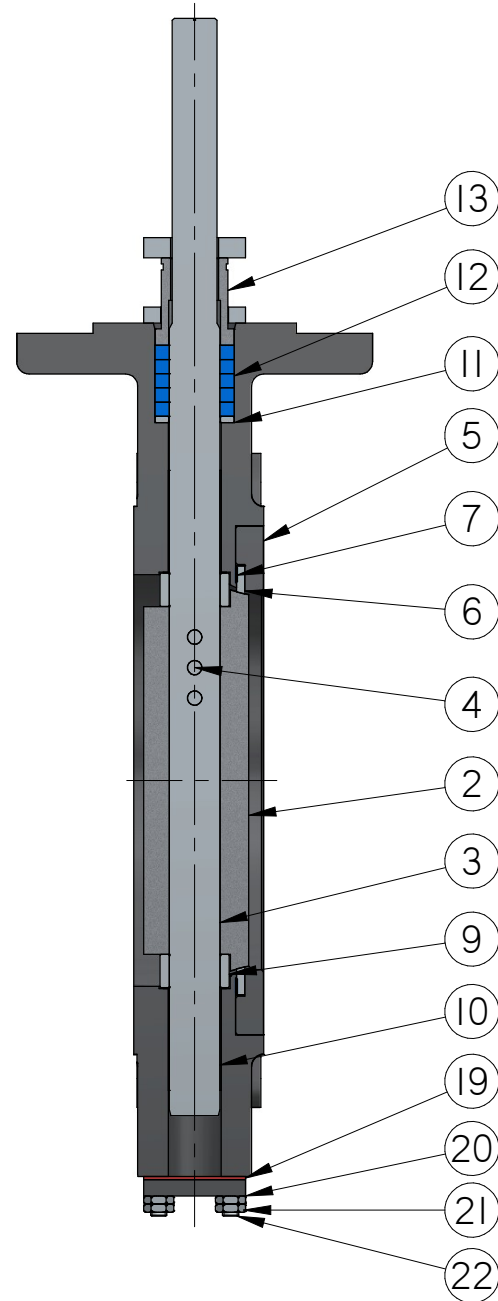
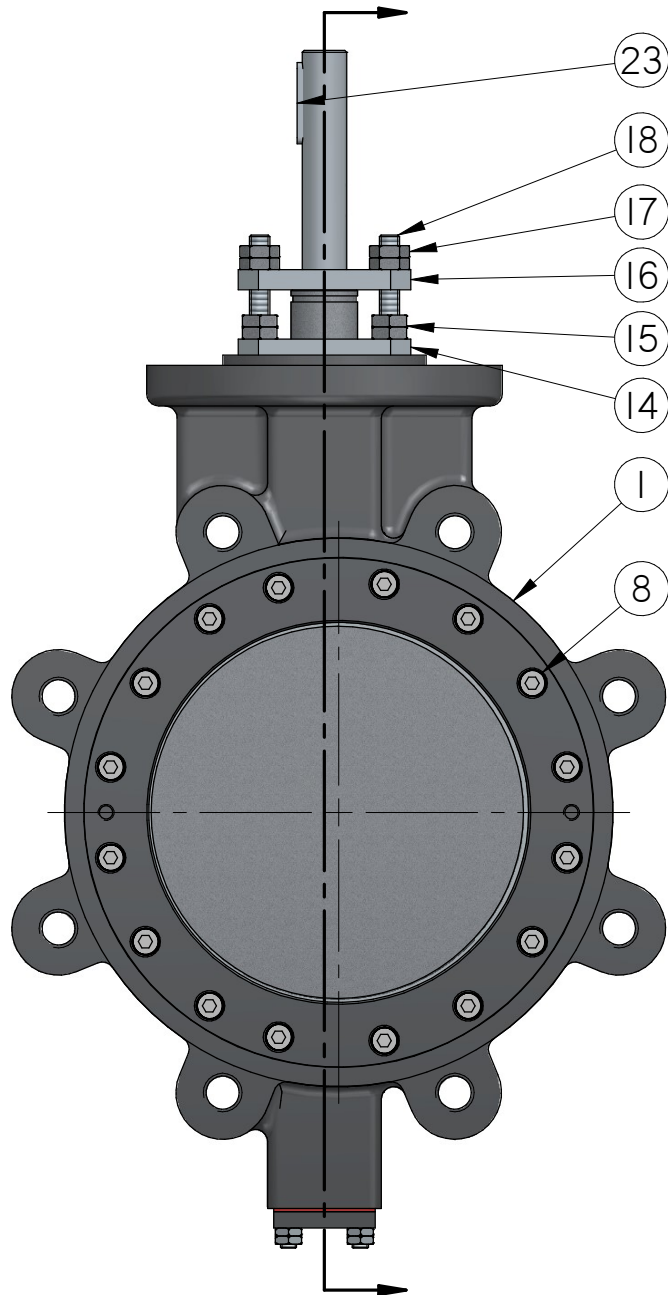
Telephone +44(0)8456 070710
 www.leedsvalve.com

TOV, BUTTERFLY VALVE, ASME 150, LUGGED, ENVELOPE DIMENSIONS

DRAWING NO.:
TOV-150-TL-GB

DO NOT SCALE THIS PRINT

NOTE : PICTORIAL REPRESENTATION ONLY



ITEM	PART	SDSS
1	BODY	ASTM A995 6A
2	DISC	ASTM A995 6A
3	SHAFT	ASTM A276 UNS 32760
4	PINS	ASTM A276 UNS 32760
5	CLAMPING RING	ASTM A995 6A
6	SEAL	INCONEL 625 LAMINATE
7	SEAL GASKET	GRAPHITE
8	CLAMPING RING SCREWS	ASTM A276 UNS 32760
9	DISC SPACER	ASTM A276 UNS 32760
10	BEARING	NORGLIDE OR METALIC (*1)
11	GLAND RING	ASTM A276 UNS 32760
12	PACKING SET	PTFE OR GRAPHITE (*1)
13	GLAND FOLLOWER	ASTM A276 316
14	ANTI BLOWOUT PLATE	ASTM A240 316
15	ANTI BLOWOUT NUTS	ASTM A276 UNS 32760
16	GLAND PLATE	ASTM A240 316
17	GLAND NUTS	ASTM A276 UNS 32760
18	GLAND STUDS	ASTM A276 UNS 32760
19	BLANK END GASKET	GRAPHITE
20	BLANK END PLATE	ASTM A240 316
21	BLANK END NUTS	ASTM A276 UNS 32760
22	BLANK END STUDS	ASTM A276 UNS 32760
23	KEY	BS 970 080M40 (EN8)

(*1) MATERIAL SELECTION DEPENDANT ON APPLICATION

REV	DETAIL	DATE
CHANGE RECORD		
DRAWN	S. WALKER	
CHECKED		
APPROVED		

SEVERN
LEEDS

Telephone +44(0)8456 070710
www.leedsvalve.com

TOV, BUTTERFLY VALVE, ASME 150,
LUGGED, PARTS LIST

DRAWING NO.:
TOV-150-TL-SA-6A

DO NOT SCALE THIS PRINT